

Opus 10-3 - Etüde in E-Dur

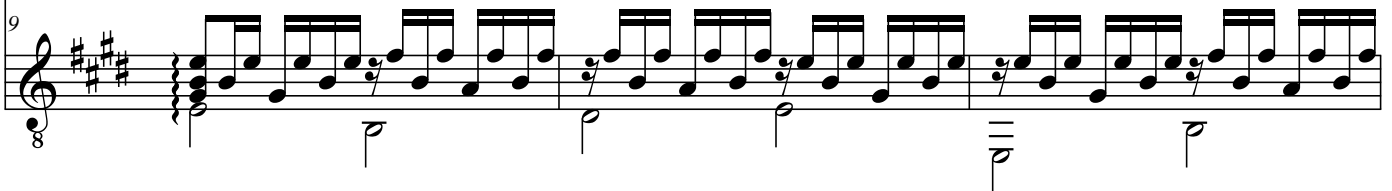
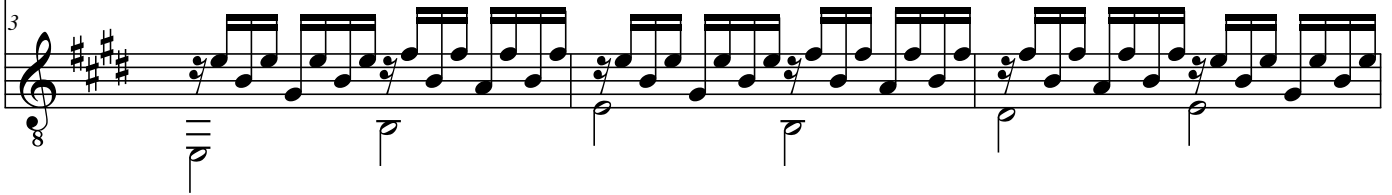
Tempo: ca. 50

Frederic Chopin (1810-1849) (Arr.: Ralf Behrens)

Klarinette in Bb



Gitarre



a tempo

Opus 10-3 - Etüde in E-Dur

The image displays a musical score for the second page of Opus 10-3, Etüde in E-Dur. It consists of two staves of music, with measures 12 through 24. The key signature is E major (one sharp) and the time signature is 3/4. The score includes various musical notations such as eighth notes, sixteenth notes, and rests. There are first and second endings marked with '1.' and '2.'. A 'rit.' (ritardando) marking is present above measure 22. The piece concludes with a double bar line and a fermata over the final note in measure 24.